



Hoda by Fibre ⚡ood

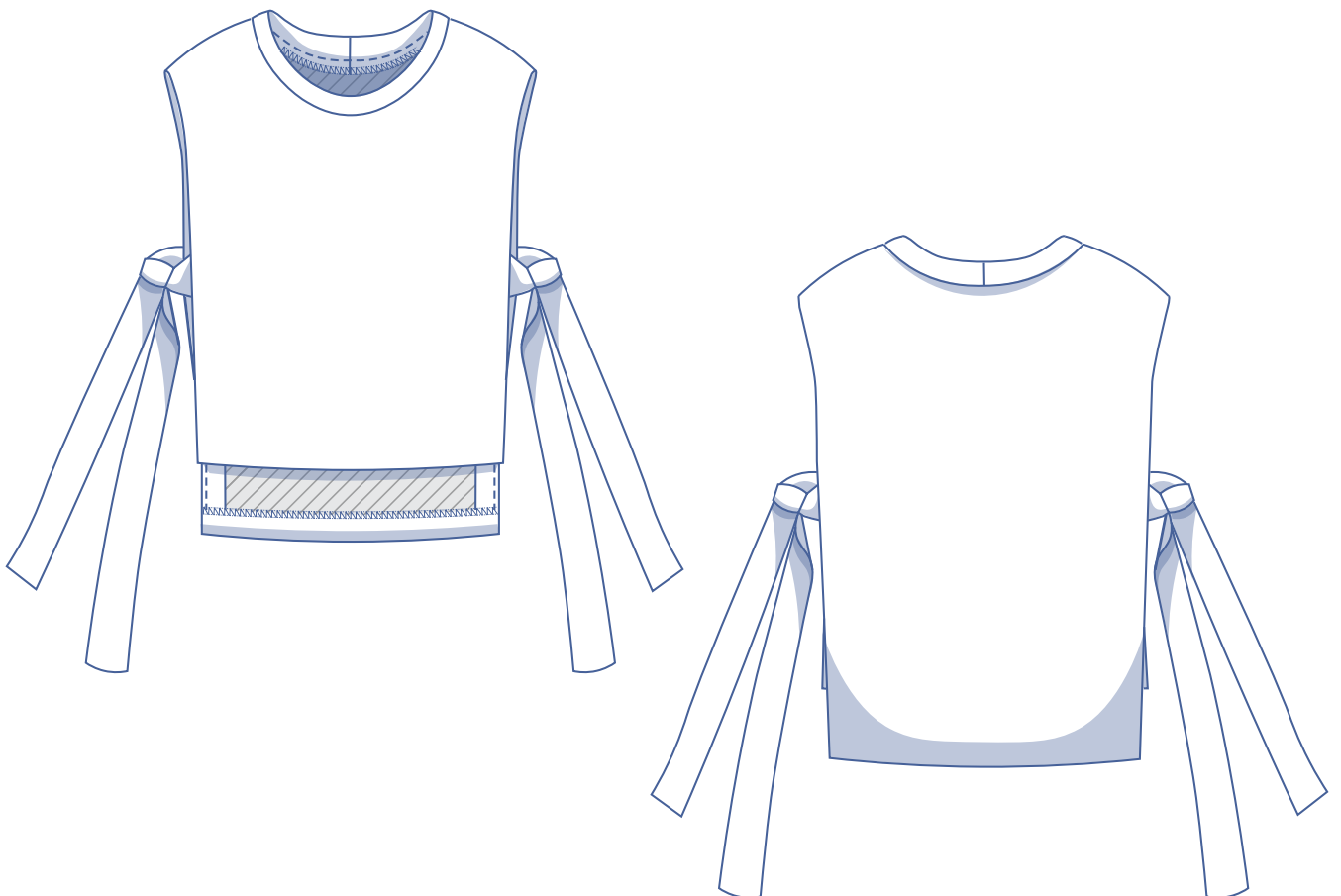
# Hoda by Fibre Mood



**XS - XXXL**

Sleeveless beauty: the debardeur is also unmissable this autumn.

With Hoda, we make an original version of it. The eye-catchers are the ribbons that can be left hanging loosely or playfully tied. Another surprise: the back section of this round-neck spencer is longer than the front section. Combine Hoda with a loose blouse underneath for a striking look.

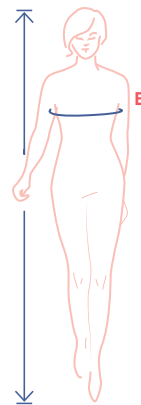




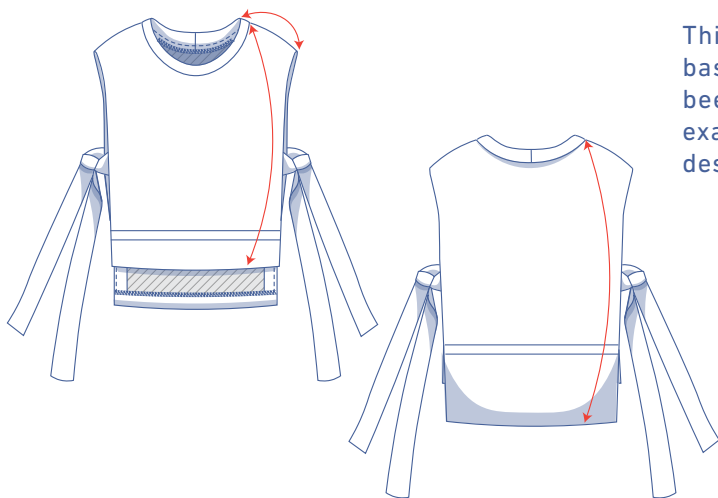
## size chart (in cm)

size	XS		S		M		L		XL		XXL		XXXL		
	4	6	8	10	12	14	16	18	20	22	24	26	28	30	32
body height	160	164	166	167	168	169	170	171	172	172	172	172	172	172	172
B (bust)	76	80	84	88	92	96	100	104	110	116	122	128	134	140	146

Choose your size based on the bust measurement. Pick the size that is the best match for your bust.



## pattern measurements (in cm)



This chart's measurements are the pattern measurements based on the fabric type and serve as a reference. Ease has been added to the width measurements (in addition to the exact body measurements) for a more comfortable fit. Hoda is designed to have a comfortable fit.

== shorten or lengthen the pattern here

size	XS	S	M	L	XL	XXL	XXXL
length F	55	57	58.75	60.5	66.75	69	71.25
length B	63.5	65.25	67	69	73.25	75.5	77.75
shoulder length*	13	14	15	16	18	19.5	21

\* Including neck band.

Compare the stated lengths to the measured or desired lengths. Lengthen or shorten the top by cutting the pattern pieces at the indicated double lines. Then either increase the distance between the cut pieces by the desired amount (to lengthen) or overlap the pieces (to shorten). Make sure that the CF and CB lines and the side seams are always straight.

### IMPORTANT

Adjust the amount of fabric to be used based on these alterations.

## notions



- Thread
- Iron-on interfacing: max. 10 cm
- Twill or grosgrain ribbon (width 4 cm): see table
- Fabric: see table

twill or grosgrain ribbon		XS	S	M	L	XL	XXL	XXXL
length per side	cm	112.5	115.5	118.5	121.5	129	132	135
total length	cm	225	231	237	243	258	264	270

fabric use		XS	S	M	L	XL	XXL	XXXL
fabric width 110 cm	cm	125	125	130	135	160	165	170
fabric width 140 cm	cm	70	110	110	115	115	140	145

The corresponding fabric layout can be found on page 6 of these sewing instructions.

## fabric advice



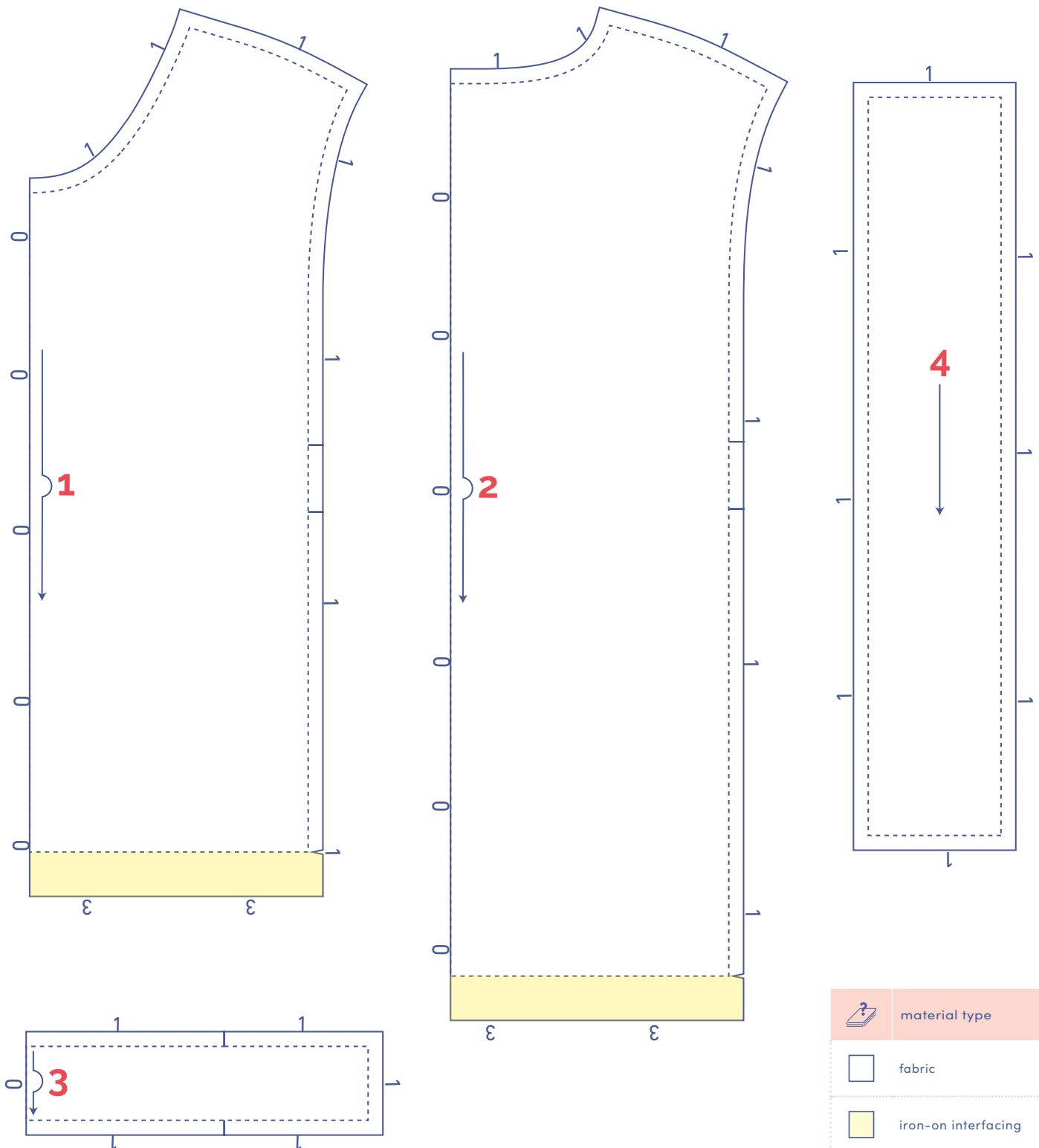
Knitted fabrics are of course particularly suitable for this debardeur, but this pattern also lends itself to woven fabrics. A stylish jacquard or a fabric with an interesting structure / texture will undoubtedly give a very nice result.



## pattern pieces & seam allowances (in cm)

To sew the garment as described in the instructions, draw the illustrated seam allowances around the paper pattern pieces before cutting them out. If you are using a PDF pattern, the pattern can be printed with or without seam allowance. To find out more, watch [video](#).

1. front: 1x on fabric fold
2. back: 1x to fabric fold
3. neck band: 1x on fabric fold
4. tie: 4x

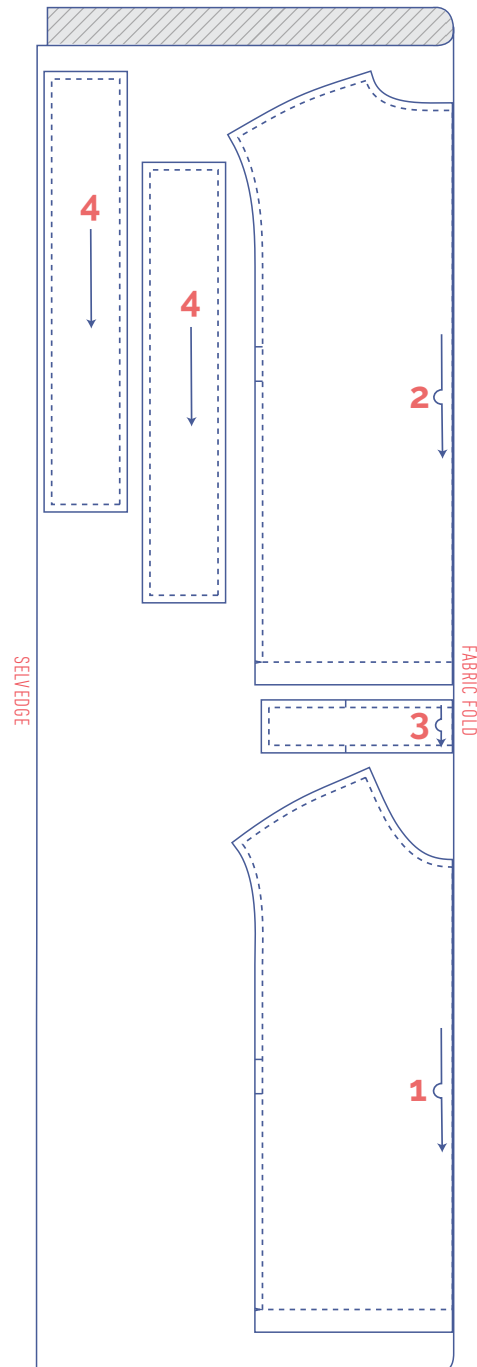
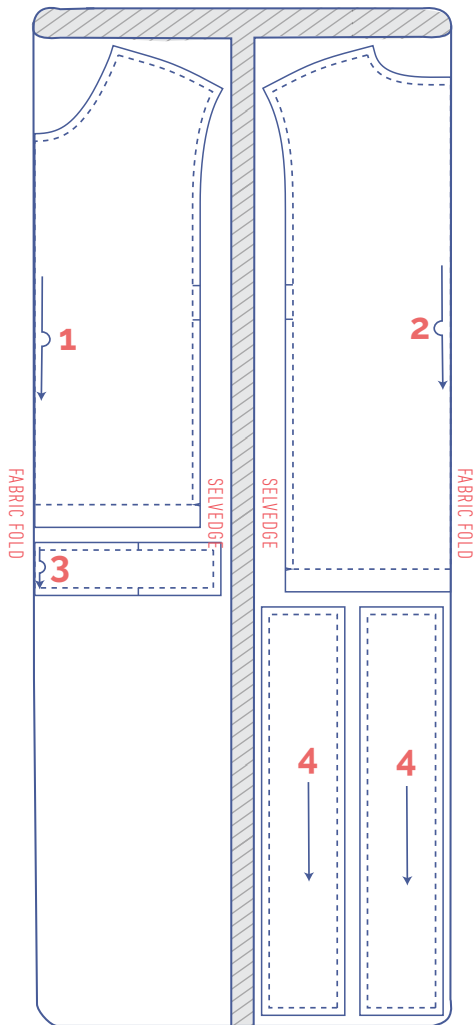


## fabric layout for solid fabrics

### fabric width 110 cm

XS - L

XL - XXXL



## marking pattern pieces



notch the paper pattern and fabric at the following points



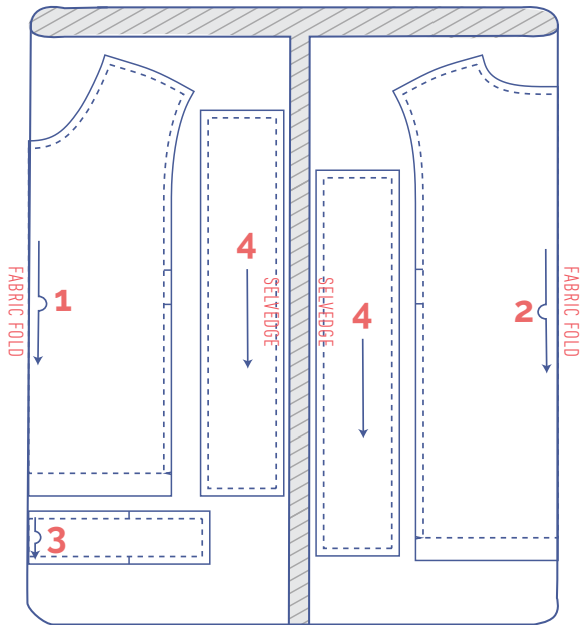
single notch



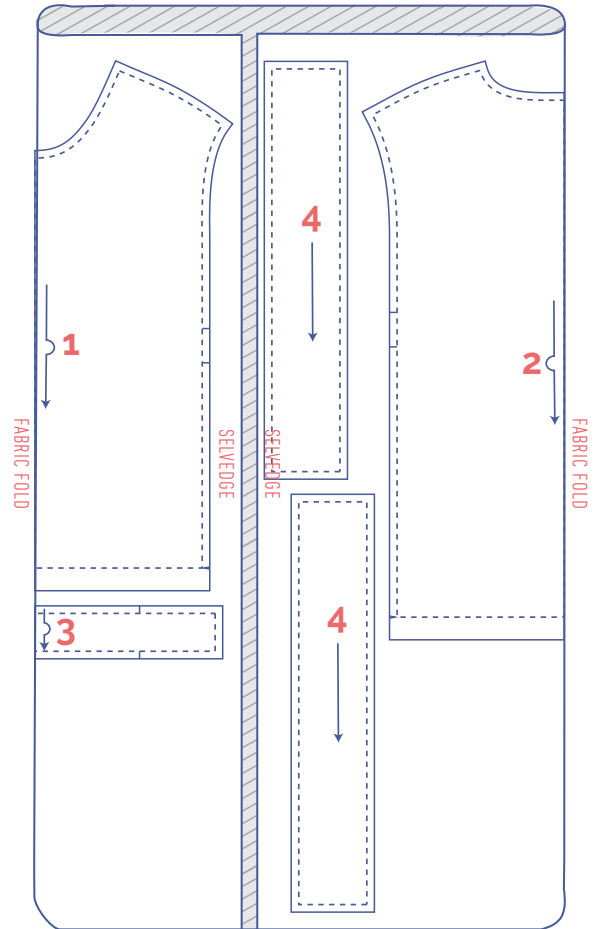
V notch/fabric fold

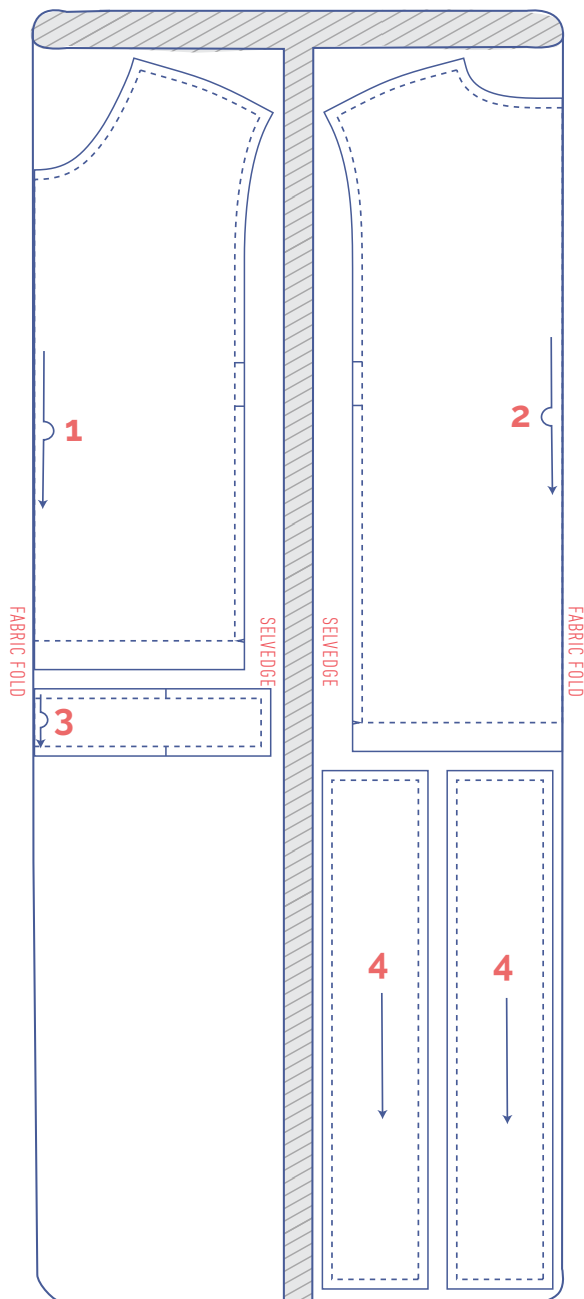
**fabric layout for solid fabrics**  
**fabric width 140 cm**

**XS**



**S - XL**





## marking pattern pieces



notch the paper pattern and fabric at the following points



single notch



V notch/fabric fold



# sewing instructions



The method used to finish the seams depends on the fabric used. The pieces are always sewn together with the right sides of the fabric facing, unless stated otherwise.

**F** front

**B** back

**CF** centre front

**CB** centre back

 right side

 wrong side

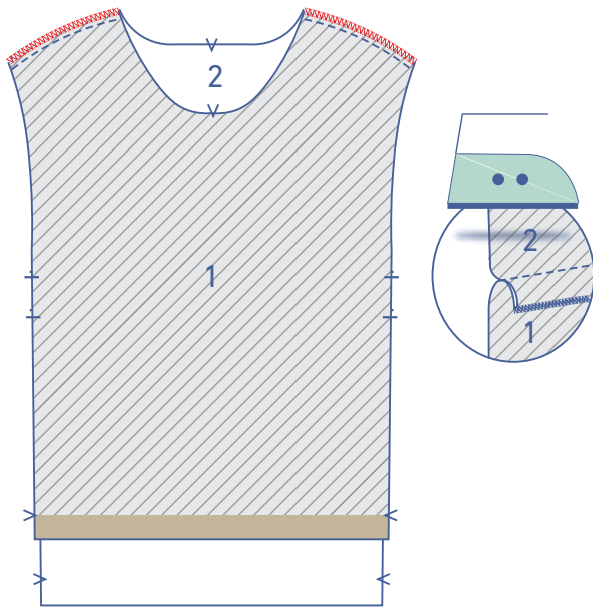
 iron-on interfacing

 twill or grosgrain ribbon

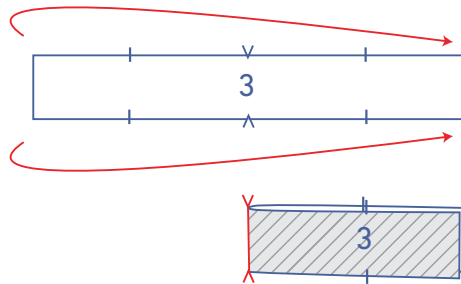


## 1

Pin and sew the shoulder seams of the F (1) and B (2).

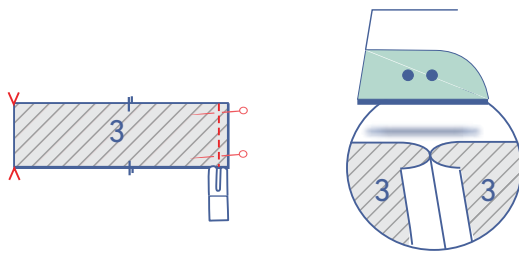


Finish the raw edges together with overlock stitching.  
Press the seam allowance towards the F.

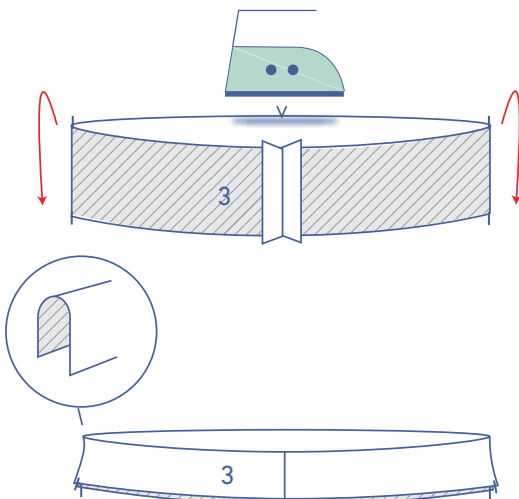


**2**

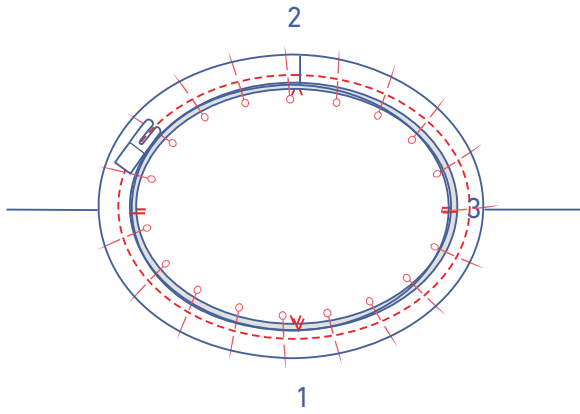
Fold the neck band (3) in half with the short ends and the right sides together.



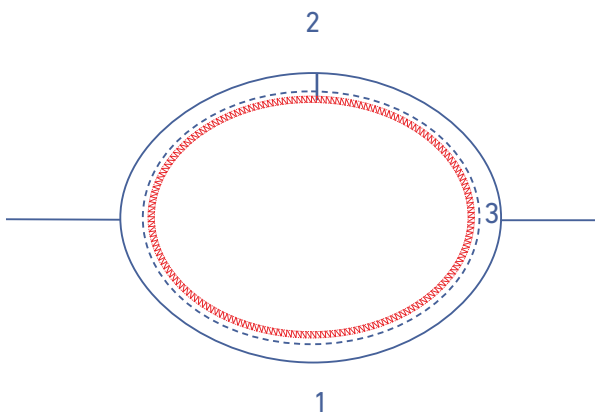
Pin and sew the CB seam. Press the seam allowance open.



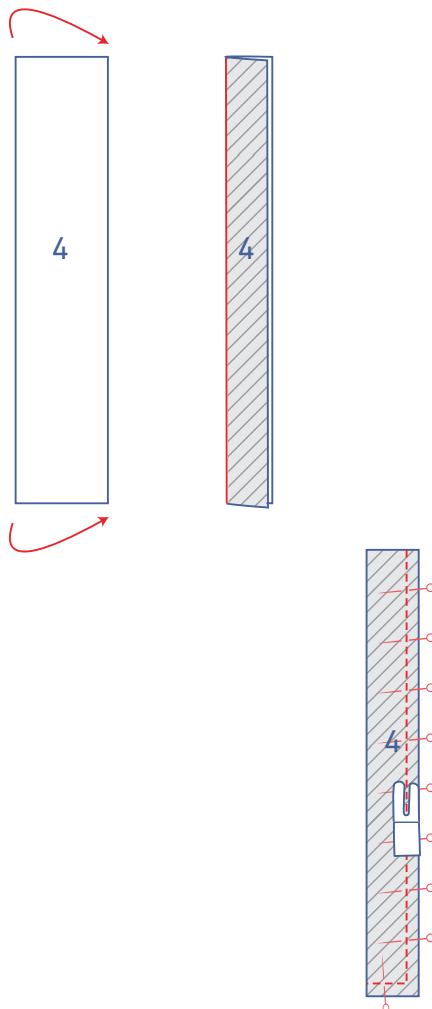
Press the neck band in half with the long ends and the wrong sides together.



Pin and sew the raw edges of the neck band to the right side of the neckline, matching the markings. The neck band's CB seam match the V-notch in the back. The neck band notches match the shoulder seams and the other V notch in the neck band matches the CF of the front. Make sure you pin at all notch points and stretch the neck band as you sew.



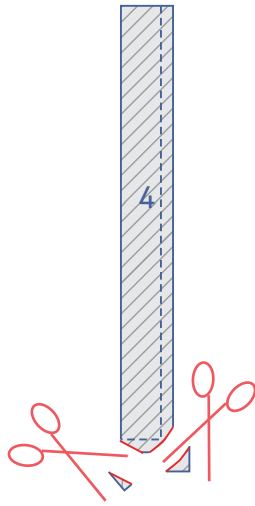
Finish the raw edges together with overlock stitching.



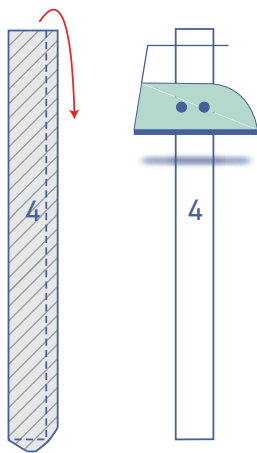
### 3

Fold the ties (4) in half with the long ends and the right sides together.

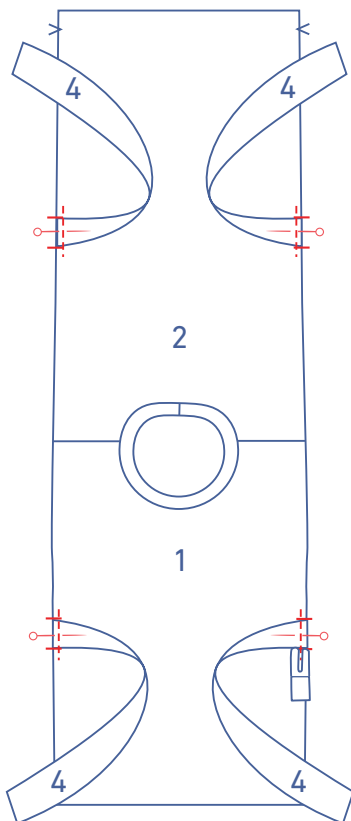
Pin and sew the indicated ends.



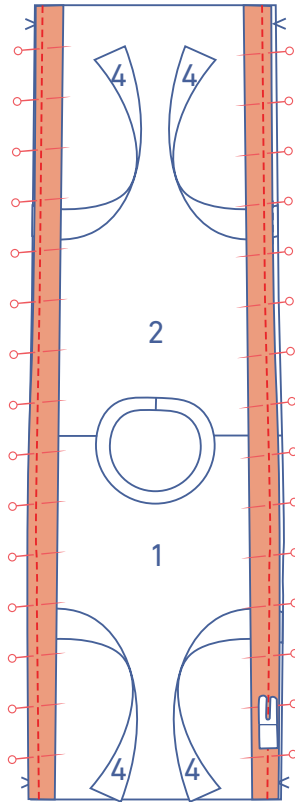
Trim the seam allowance at the corners.



Turn the right way out and neatly press flat.



Pin the ties on the designated positions on the F and B. Sew into place at presser foot width from the edge.

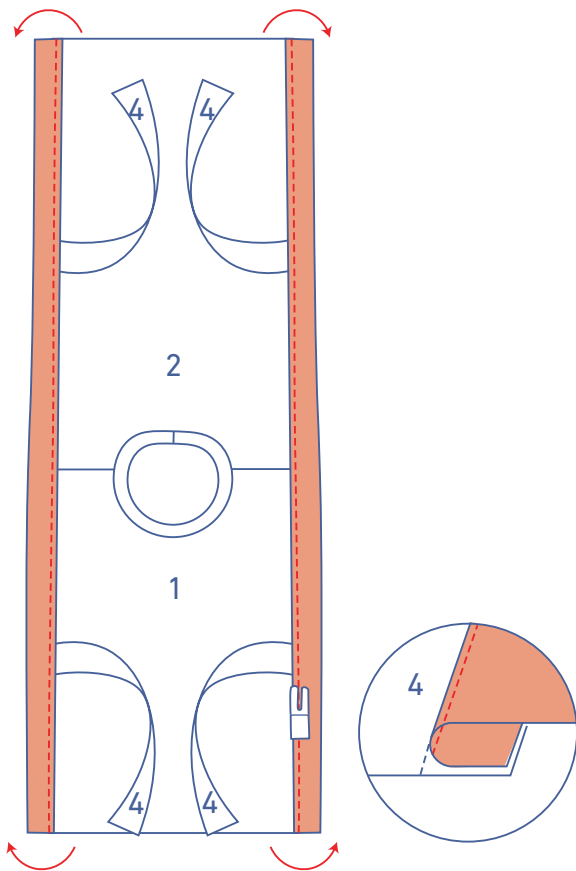


## 4

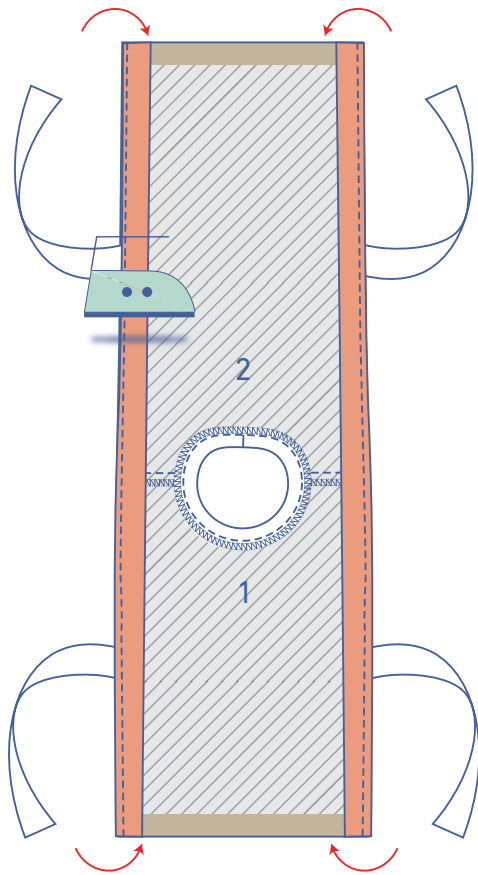
Pin and sew the twill or grosgrain ribbon to the sides of the F + B, right sides together.

### Note!

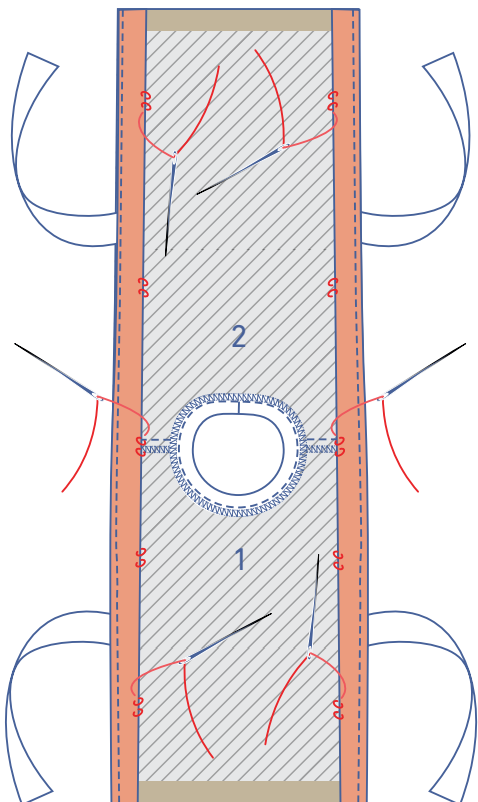
The ribbon is shorter than the fabric. You will have to ease in the fabric to fit the ribbon.



Fold the ribbon over and sew to the seam allowance underneath, right next to the seam.

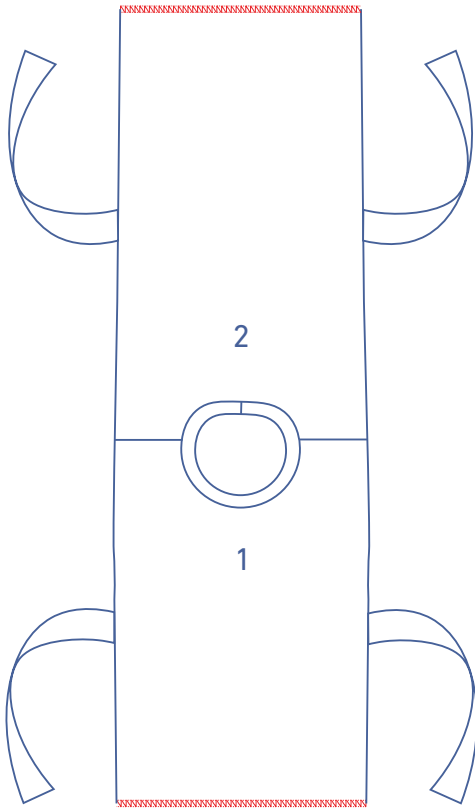


Press the ribbon neatly towards the wrong side.



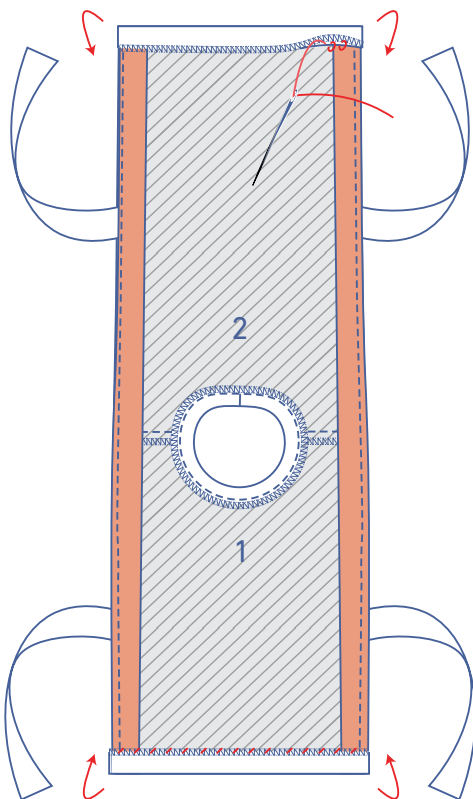
Secure the ribbon with a few stitches at the shoulder seams and where necessary.





## 5

Finish the hem with overlock stitching.



Press the hem allowance over to the wrong side. Hand sew the hem allowance into place.